



Long Lake, N. Y., Adirondacks

## LONG LAKE, NEW YORK

Situated in the most picturesque section of the Adirondacks not far from the famous Mt. Marcy, the highest of the range, is Long Lake, some 14 miles in length. Roads lead into Long Lake from three different directions, all of which pass for many miles thru virgin forests. The road following its shores offers one of the most charming drives of the entire Adirondack region.

Good bass and trout fishing are available to those who are followers of Isaac Walton. One golf course is now in use and another is in the course of construction. Excellent hotels offer accommodations for the tourist and many forms of recreation provide entertainment.



*Shore near Sagamore Hotel*



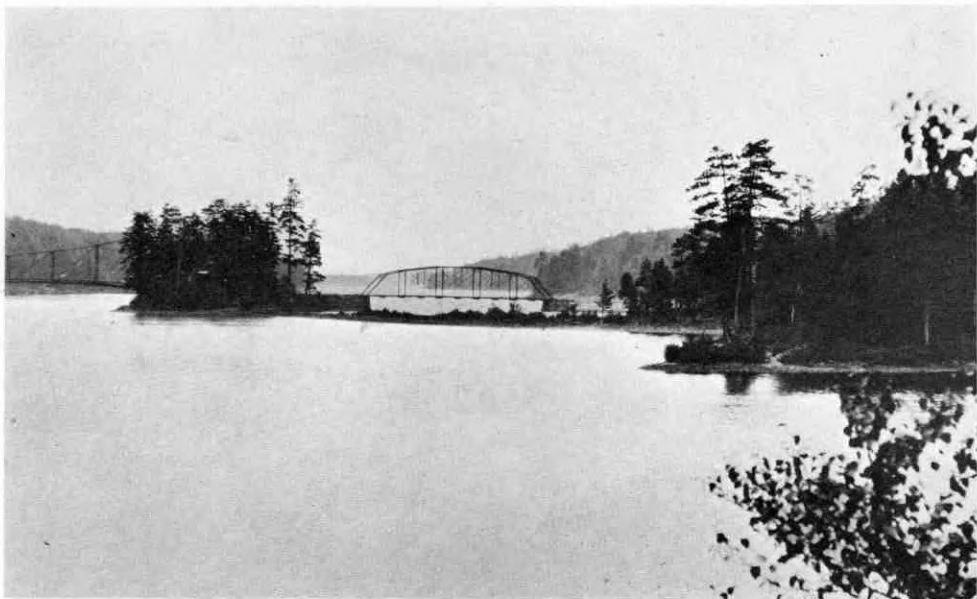
*Long View*



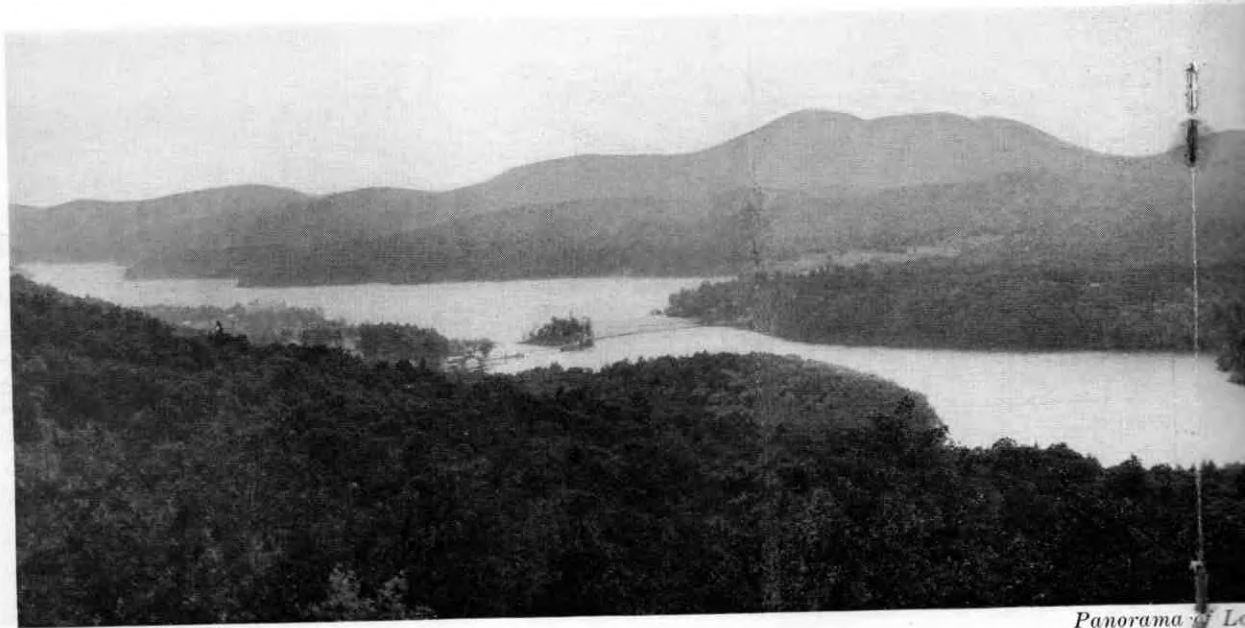
*Looking toward Inlet*



*Long Lake from Camp Etelka*



*Long Lake from Sagamore Hotel*



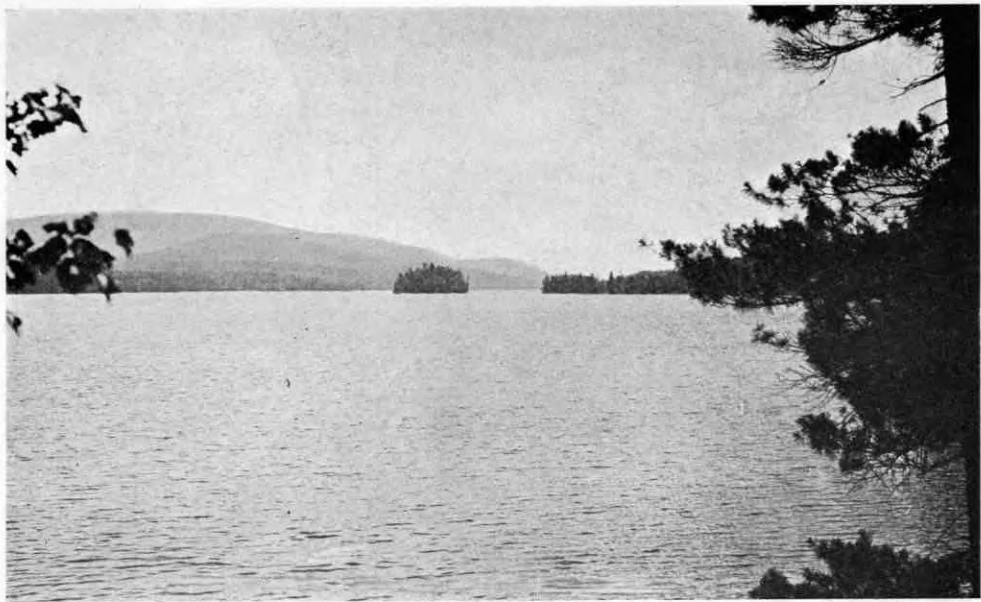
*Panorama of Lake*



*na of Long Lake*



*Moonlight on Long Lake*



*Looking up Long Lake*

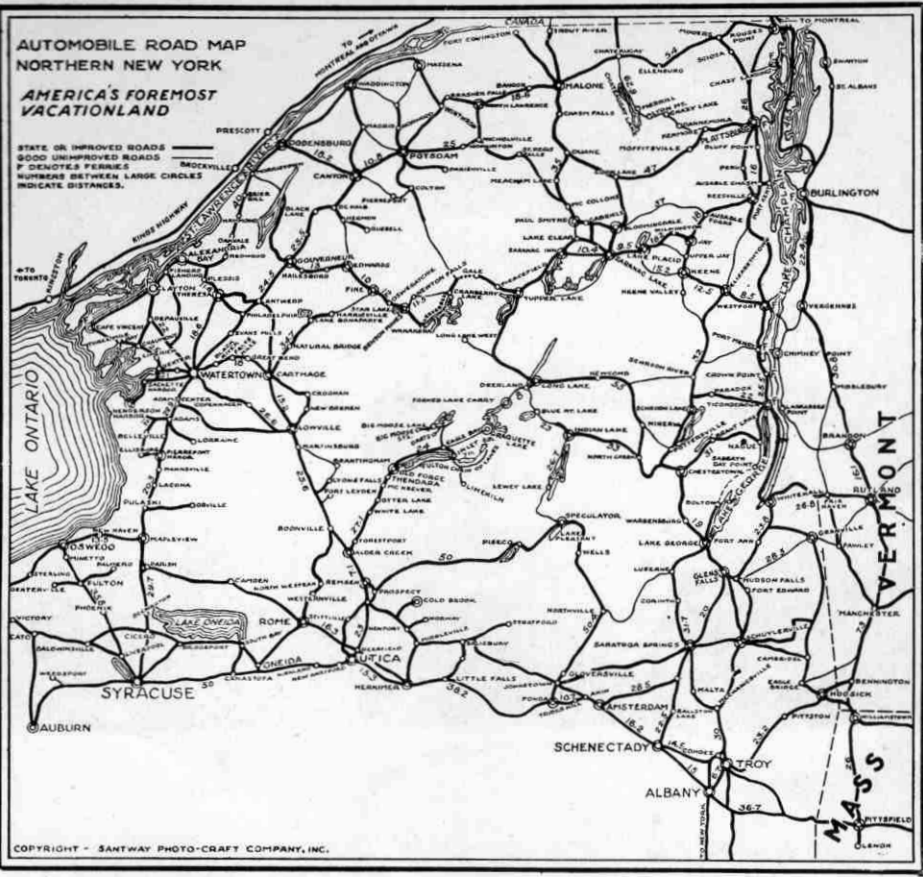


*Looking toward the Outlet*

**AUTOMOBILE ROAD MAP  
NORTHERN NEW YORK**

**AMERICA'S FOREMOST  
VACATIONLAND**

STATE OR IMPROVED ROADS ———  
GOOD UNIMPROVED ROADS - - - - -  
F DENOTES FERRIES  
NUMBERS BETWEEN LARGE CIRCLES  
INDICATE DISTANCES.



COPYRIGHT - SANTWAY PHOTO-CRAFT COMPANY, INC.

Santway Photo-Craft  
Company, Inc.  
Watertown, N. Y.  
Printed in U. S. A.